



LASER STATION

WELASE™



GRAVOTECH

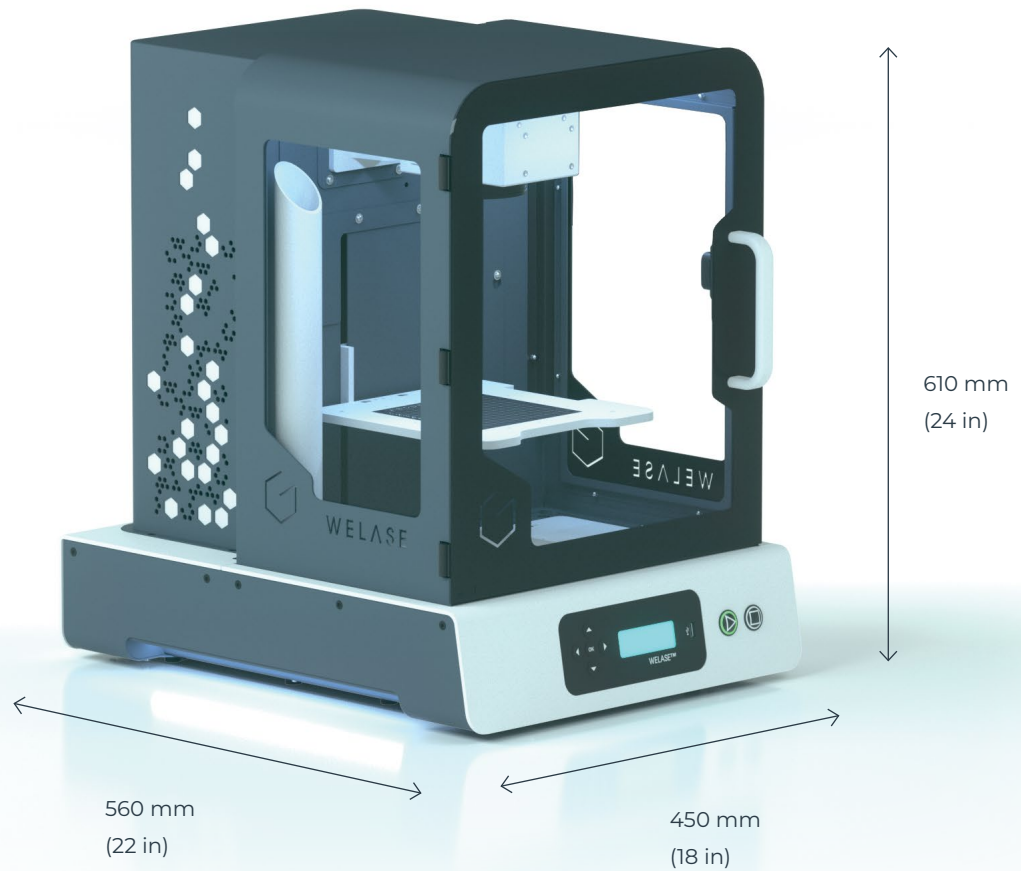
by  **BRADY**



LASER STATION
WELASE™

Small laser engraver for personalization,
jewelry engraving, and parts marking for industry

WeLase is a compact laser marking station for jewelry engraving, personalizing objects, and part identification. Its high-speed, high-quality markings, and large window allow you to control the engraving or marking at any time.



LASER ENGRAVER FOR EVERY MATERIAL

The WeLase is available with Fiber, MOPA, Hybrid, Green or CO2 laser sources to achieve the best results on a wide range of materials. With many options and accessories, this small laser engraver can be configured to your specific needs and items. For example: engrave the inside of rings made of precious metals, personalization of perfume bottles, mechanical parts in stainless steel, plastic containers, wood cutting boards, or leather goods, and many other possibilities!

COMPACT LASER MARKING MACHINE

Small footprint, quiet, with a modern design, and large viewing windows, this laser marking machine has been designed with high-durability in mind. Meeting the most stringent global safety regulations and Class 1 certification, WeLase is perfect for public and work-related environments.

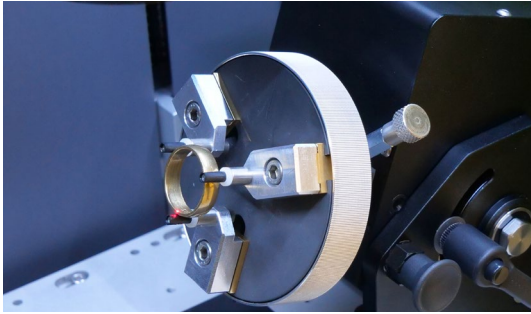
HIGH-END LASER TECHNOLOGY MADE SIMPLE

With our professional compact laser engraver, even without prior experience, you can benefit from our cutting-edge technology in an easy-to-use laser marking station. The WeLase™ comes with various features that fit your needs: a high-speed galvanometric marking head, an automatic height-adjustable for a better laser beam focus, previews of the proper positioning of your objects, and plenty of positioning jigs. This small laser engraver is available with our range of software, from easy, no-training-required options (ABC, Catalog) to advanced professional solutions (Gravostyle™, Lasertrace).

[SEE OUR VIDEO](#)



ACCESSORIES



Pack Jewel

The WeLase™ becomes the perfect jewelry engraving machine thanks to its precise jewelry positioning. It produces contrasted results, white markings, or deep engravings on the interior/exterior of rings and bracelets. It can also cut thin flat items.



Pack Easy Fix

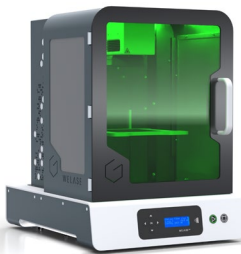
With this pack, you can easily place pens, bottles, or flasks, in the set of positioning tools and quickly reposition the next object to mark.

- Versatile: from a pen to a bottle with the same clamp.
- No clamping, no chucks, instant item positioning.



Pack Safe Air

Compact exhaust with HEPA filters for every environment. Silently extract fumes and particles to keep the machine in perfect working condition and the workspace clean and odourless. Its small size makes it ideal for retail spaces.



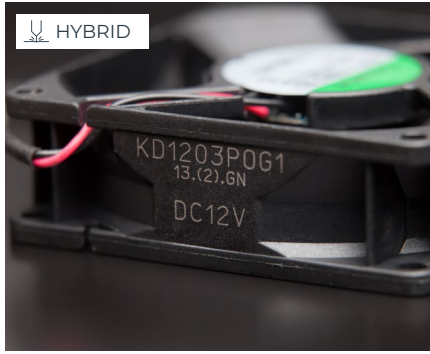
COMPACT LASER FOR PART MARKING

The WeLase™ is also adapted for direct part marking. From equipment nameplates to hydraulic valves and everything in-between, this laser marking machine can identify plastic and metal parts with a serial number, logo, or 2D code (such as a Datamatrix or QR code) thanks to our industrial software, Lasertrace. The optional side metal plates add resistance to the machine, while the bluescreen shows important information and error-codes.

LEARN MORE ABOUT
THE WELASE™



APPLICATIONS



Traceability of industrial parts



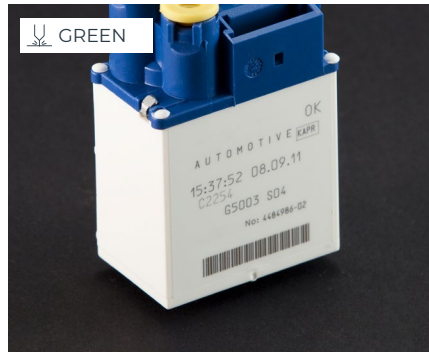
Cutting & engraving



Marking tools for identification and equipment traceability



Cosmetics & luxury



Automotive marking



Gifts & personalization

MATERIAL CHARACTERISTICS

Technology		FIBER	GREEN	HYBRID	MOPA	CO2
Materials	Metals	◄◄◄	●	●	◄◄◄	
	Plastics	●	●	●	●	◄◄
	Glass, crystal					●
	Wood, varnished wood		●			◄◄◄
	Leather		●			●
	Textiles					●
	Paper, cardboard, cork					◄◄
	Engraving materials	◄◄◄	◄◄◄	◄◄◄	◄◄◄	◄◄◄

◄ = Cutting ◊ = Engraving / Deep Marking ● = Marking / Etching

MAKE YOUR SAMPLES



SOFTWARE



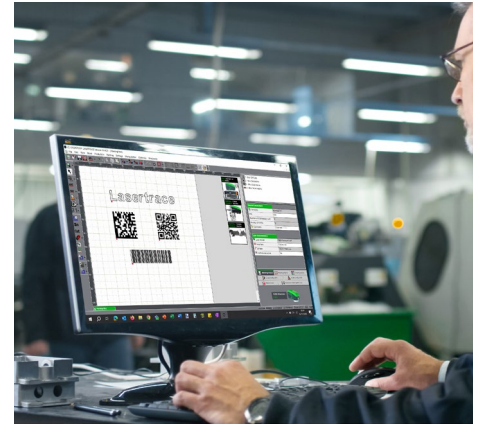
Catalog

Do you have a limited range of products to engrave? Catalog is the right choice for you! Contact us for a customized software version, integrating your own range of products.



Gravostyle™

One-of-a-kind piloting software for Gravotech laser and rotary engraving machines.



Lasertrace

Lasertrace is a unique software specially designed to create marking files to be loaded in the laser system. It includes a graphic composition to add text, logos and codes like Datamatrix in your marking templates.

SERVICE & SUPPORT



Training

Standard or customized training sessions, at your place or online.



Technical support

Gravotech experts dedicated to support and guide you.



Maintenance

Gravotech has established a dedicated program for each machine type, including cleaning, adjustments, safety checks and more.

TECHNICAL DATA

WELASE™

Model	CO2	FIBER	GREEN	HYBRID	MOPA
					
Laser technology	CO2	Fiber	Green (DPSS)	Hybrid (DPSS)	MOPA
Machine dimensions (L x W x H)	450 x 560 x 610 mm (18 x 22 x 24 in)				
Weight	44 kg (97 lbs)	42 kg (92.6 lbs)	39 kg (86 lbs)	39 kg (86 lbs)	40 kg (88,2 lbs)
Engraving area	100 x 100 mm (4 x 4 in)	110 x 110 mm (4.33 x 4.33 in)	110 x 110 mm (4.33 x 4.33 in)	110 x 110 mm (4.33 x 4.33 in)	110 x 110 mm (4.33 x 4.33 in)
Max object size (L x W x H)	340 x 200 x 180 mm (13.4 x 8 x 7 in)	340 x 200 x 100 mm (13.4 x 8 x 4 in)	340 x 200 x 100 mm (13.4 x 8 x 4 in)	340 x 200 x 100 mm (13.4 x 8 x 4 in)	340 x 200 x 100 mm (13.4 x 8 x 4 in)
Door type	Manual				
Laser safety classification	Class 1 Door Closed / Class 2M Door Open (Aiming Diode)				
Wavelength	10,600 nm	1,064 nm	532 nm	1,064 nm	1,064 nm
Laser power	30 W	20 W / 30 W	5 W	10 W	30 W
Communication	Ethernet, USB and Wifi				
Software compatibility	Catalog / Gravostyle™ / Lasertrace				Lasertrace
Power supply	100 / 240V AC - 50 / 60Hz				



info.mx@gravotech.com
 +52 1(55) 53 57 27 65 , 66, 67
www.gravotech.mx

GRAVOTECH S. DE R.L DE C.V
 Lago Erne, 246, Colonia Pensil
 CP 11430, CDMX, Mexico

Distributed by:



Follow us:



gravotech.off



Gravotech Group



Gravotech



Gravotech - Gravograph